

Summer 2017

# CITY SCENE

NORMANDY PARK



---

**City Credit  
Rating Upgrade**

---

**Music in the Park  
Summer Concert Series**

---

**PROS Plan Update**

PRSR STD  
US Postage Paid  
Seattle, WA  
Permit No. 1

ECRWSS  
Postal Customer



PROUDLY SERVING THE NORMANDY PARK COMMUNITY



**SOLD**



**Normandy Province Home, sold for \$961,000 (over asking price)**



**SOLD**



**Mid-Century Modern Home, sold for \$699,000**

*Call the Ohrt's for all your Normandy Park listings and purchases today. They are full time Realtors who work year-round for all your real estate needs with a team to assist **you** through every step.*

**CALL US TODAY AND LET'S GET YOUR HOME SOLD!**



Marketplace  
**Sotheby's**  
INTERNATIONAL REALTY



**Chad & Cyndi Ohrt**  
Broker/Managing Broker

OhrtRealEstateGroup.com | Chad:(206)227-4500 | Cyndi:(206)919-1109 | [Chad@OhrtGroup.com](mailto:Chad@OhrtGroup.com) | [Cyndi@OhrtGroup.com](mailto:Cyndi@OhrtGroup.com)

# Inside

From the Mayor.....	4
Council Corner.....	6
Preschool Teacher Retirement.....	8
Normandy Park's Credit Rating Upgraded.....	9
PROS Planning Update.....	10
Engaging Trees in South King County.....	11
Completion of Normandy Road Project.....	12
Register to Vote!.....	13
Arts Commission Music in the Park.....	14
Facility Rental Information.....	15
Officer Graduation.....	16
Drug Take Back Program.....	16
Status of Hiring Police Officers.....	17
Word Search: Summer in the Park!.....	18
EDC After-Hours Mixers.....	19
Transit Pilot Project.....	20
Community Events Calendar.....	22
Medical Lending Closet.....	23
Highlights from the Normandy Park Arts Festival.....	24
From the City Manager.....	25
Business Directory.....	26

**Furnaces  
Air Conditioning  
Heat Pumps  
Heating Oils  
Service/Installation**

**GLENDALE  
HEATING**  
AND AIR CONDITIONING

**206.243.7700**

PROUD MEMBER OF THE  
MASTER BUILDERS ASSOCIATION



*"Cool and comfortable customers since 1938"*

**CityScene** NORMANDY PARK

**SUMMER 2017**

City Scene is published by Philips Publishing  
Group for the City of Normandy Park

**PUBLISHER**

Peter Philips: 206-284-8285  
peter@philipspublishing.com

**ADVERTISING SALES**

Nicole Cross 253-970-0054  
nicole@philipspublishing.com

**EXECUTIVE EDITOR**

Mark Hoppen 206-248-8246

**MANAGING EDITOR**

Debbie Burke 206-248-8248

**ACCOUNTING**

Crystal Alaniz



**Philips Publishing Group**

CITY HALL  
801 SW 174th Street  
Normandy Park WA 98166

CITY HALL MAIN LINE  
206-248-7603

2201 W. Commodore Way  
Seattle, WA 98199  
206-284-8285  
www.philipspublishing.com





Jonathan Chicquette  
Mayor

During a walk on what turned out to be a remarkable late spring evening, a resident stopped me for a quick chat. She asked how the city was doing and wanted to thank the Normandy Park Police Department for the recent increase in speed enforcement. Of course, traveling at the posted speed is a measure of safety, but more importantly, it is a sign of respect to your neighbors and the city we all share and love. On behalf of a grateful community, a big thank you to Chief Yourkowski and the Normandy Park Police Department. Your attention to the needs of those you serve and protect is greatly appreciated.

Looking back on our Independence Day parade, all of the day's festivities like the colorfully decorated bikes, the exotic and classic cars, candy scattered across Marine View Drive and hot dogs in the field at the Normandy Park Community Club. It's always an enjoyable day, and the number of people that show up to celebrate and share in this event is astounding. As much fun as we all have during the 4th of July celebration, I am reminded of those who have come before us, not here with us now, whose service and sacrifice contributed so much to our freedom, hopes, and dreams. The heroes in this world are the ones who do what is right despite the risk to themselves. They stand for something bigger than their ego and speak with conviction to change the word for the betterment of all people. As I walk around the city and get a friendly wave from my neighbors, I am thankful to live here. But our peace and safety shouldn't be something rare. My challenge for each of you is to do something for someone else this summer. Mow a neighbor's lawn, walk their dog, or pick up their mail while they are on vacation. Great or small, these actions build a resilient community.



## CITY DIRECTORY

### City Hall

801 SW 174<sup>th</sup> Street  
Normandy Park WA 98166

City Hall Main Line  
206-248-7603

Police Non-Emergency  
206-248-7600

### Police & City Hall

#### Office Hours

8:30am–4:30pm  
and closed noon–1pm  
Monday through Friday

### City Administration

City Manager  
206-248-8246

City Clerk  
206-248-8248

Finance Director  
206-248-8251

Accounting Specialist  
206-248-8247

Community Development  
Director  
206-248-8253

Parks Director  
206-248-8257

Permit Tech  
206-248-8260

Public Works Operations  
206-248-8269

Public Works Engineer  
206-248-8256

Recreation/Facility  
Scheduling  
206-248-7603

Police Chief  
206-248-7600

Police Records Manager  
206-248-7600

### Passport Office Hours

9:00am–4:00pm  
Tuesday, Wednesday,  
Thursday. Appointment  
required and may be made  
by calling 206-248-8248



## Life just looks better from here.

You'll find few places offering you possibilities for creativity, action and involvement all at one community. Fewer still that offer all levels of living – also at one community. When found together, that's Judson Park, the sound choice for senior living. *Who we are* is as much a part of our fabric as *what we are*:

- Residential living for independent-minded people seeking a strong sense of community
- Short-stay rehabilitation and respite programs – open to the general public through direct admission
- On-site assisted living, memory support and long-term nursing care
- A robust, opportunity-rich lifestyle for those who aspire toward successful aging
- Accredited by CARF-CCAC for meeting strict national standards for quality services – less than one in five communities can say this

Look at life from a Judson Park point of view.

Start by calling 1-866-909-8850  
or visiting [ExperienceJudson.com](http://ExperienceJudson.com).



23600 Marine View Drive South  
Des Moines, WA 98198  
1-866-909-8850  
[ExperienceJudson.com](http://ExperienceJudson.com)



Judson Park in Des Moines, Washington, is managed by ABHOW, a California nonprofit public benefit corporation. ABHOW is a nonsectarian corporation, serving seniors through quality retirement housing since 1949. License #BH-681, DHS #797.

# Council Corner



Michelle Sipes-Marvin  
Councilmember

Happy Summer!  
Summertime in Normandy Park is my favorite time of the year. I love being able to sit on my deck and smell the salty air from the sound while listening to the

chants and cheers from Little League games at City Hall or the shouts and yells of encouragement coming from the Normandy Park Swim Club swim meets. We are so fortunate to live in a city that offers many beautiful parks and access to Puget Sound.

In addition to the beauty of our city, our Arts Commission has put together a fantastic line up for the 22nd year of Music in the Park, which features free opportunities to enjoy music in our gorgeous Marvista Park. The first event is on Sunday, July 16th from 5:00–6:30pm with The Nowhere Men, a Beatles Tribute Band. The shows are every Sunday through August 27th. Please keep an eye out for concert-specific details.

Our Metropolitan Parks Department has been hard at work making our parks welcoming and appealing. Please be sure to check out the new plants and improved trails at Nature Trails Park. I personally love to pack a lunch and walk down to the beach at Marine View Park to relax, stroll the beach and look for new, interesting shells to add to my collection. Or you can stop by our wonderful City Hall Park to enjoy the playground or catch a fun Little League game.

One of my absolute favorite things about our special community is seeing neighbors chatting on the sidewalks while out for walks and children outside

playing in their yards, or walking, biking and riding scooters to the parks or their friend's house. You can hear their squeals of delight echo throughout the neighborhoods. You never know who you will see or when you will meet a new neighbor out walking in our delightful city.

On a serious note, we do need to remember ways to keep our families and city safe. Please keep the following things in mind as we enjoy our (hopefully) beautiful summer.

- Please watch your speed when driving. The speed limit throughout Normandy Park is 25mph. With the many children out playing and riding bikes, we need to realize that the life of another is so much more important than getting someplace one or two minutes faster. I understand we are all busy, but slow down, roll down your window and enjoy the charming scenery and fresh air.
- Please ensure that your children are wearing helmets when they are riding their bikes, scooters, skateboards, etc.
- Please remember to cross at crosswalks and to use sidewalks where they are available.
- If you see something that looks suspicious or concerning please call 911 or the non-emergency line at (206)248-7600.

In closing, I wish everyone a fun and safe summer in Normandy Park. My family and I are often out at the parks or walking around the neighborhood, so stop and say hello!





# OLYMPIC VIEW

D E N T A L

GENERAL, COSMETIC  
& IMPLANT DENTISTRY

PAUL A. CHILTON D.D.S.

SCHEDULE YOUR VISIT TODAY

Actual Patient

Now  
offering  
Therapeutic  
Botox, and  
Dermal  
Fillers

## Enhancing Smiles



Dr. Paul Chilton

Whether you have gaps, chips, stains, misaligned teeth, missing teeth or other issues, Dr. Chilton can create a complete cosmetic treatment plan that is right for you. At Olympic View Dental, we offer options to make amazing improvements that will bring you confidence and comfort to your smile. Planning and enhancing your smile

enhancement is an artistic process that Dr. Chilton excels in. To learn more about cosmetic options available to you, please contact our office today.

**206.824.4700**

19703 First Avenue South, Seattle, WA 98148

Call today and see how  
Dr. Chilton can Enhance your smile

Your smile leaves a lasting impression and may be your most important feature. Dr. Chilton combines various techniques and treatments to create a spectacular, natural-looking smile. The cosmetic dental services and techniques now available open up the way for looking younger, feeling better and enjoying greater success in life.

- Porcelain Veneers
- Whitening
- Dental Implants
- Therapeutic BOTOX and Dermal Fillers
- Tooth Colored Fillings
- Porcelain Crowns

Follow us on Twitter and be sure to  
Like us on Facebook

[www.olympicviewdental.com](http://www.olympicviewdental.com)

## Contact Your City Council



Position 1  
Susan West  
206-818-6945  
Susan.West@ci.normandy-park.wa.us



Position 2  
Mike Bishoff  
206-679-4720  
Mike.Bishoff@ci.normandy-park.wa.us



Position 3  
Jonathan Chicquette  
253-666-9886  
Jonathan.Chicquette@ci.normandy-park.wa.us



Position 4  
Kathleen Waters  
206-383-6620  
Kathleen.Waters@ci.normandy-park.wa.us



Position 5  
Michelle Sipes-Marvin  
206-200-6719  
Michelle.Sipes-Marvin@ci.normandy-park.wa.us



Position 6  
Tom Munslow  
206-824-5454  
Tom.Munslow@ci.normandy-park.wa.us



Position 7  
Sue-Ann Hohimer  
206-288-0760  
Sue-Ann.Hohimer@ci.normandy-park.wa.us

### MONTHLY MEETING CALENDAR

#### Arts Commission

1st Tuesday, 7pm

#### Economic Development Committee

1st Tuesday, 7pm

#### Council Meeting

2nd Tuesday, 7pm

#### Metropolitan Parks District

2nd Tuesday, 6:30pm (if necessary)

#### Civil Service

3rd Tuesday, Noon

#### Park Commission

3rd Wednesday, 7pm

#### Planning Commission

3rd Thursday, 7pm

#### Council Study Session

4th Tuesday, 7pm (if necessary)

# Preschool Teacher Retirement

BY JENNIFER FERRER-SANTA INES, FINANCE DIRECTOR

A sincere thank you and best wishes for a happy retirement to Gretchen Tryon. With nearly ten years teaching for Normandy Park Preschool, Gretchen has touched the lives of many children who have gone through the preschool program.

Prior to the last day of school, we asked Gretchen to share her most memorable moment and highlight of her time with us and she stated the following:



*Gretchen Tryon is retiring after nearly ten years teaching for Normandy Park Preschool.*

"The most memorable moment I have had teaching at Normandy Park Preschool is the opening of the new outside play area at City Hall Park. A wonderful and safe area for the kids to play. I was glad I didn't have to teach all the kids how to get on and off the old tire swing anymore!"

"The highlight of my time teaching has been getting to know the families from the time they dropped their first child off in the 3.5–4.5 class to their last child graduating from Pre-K. I will miss not being able to teach the next set of siblings."

Gretchen is organized, has a great sense of humor, is patient and nurturing, and has been a great program partner to parents, peers and children. No more orientations, lesson plans, and field trips!

What new activities and new experiences are in her future? Gretchen is looking forward to traveling, hiking, camping and skiing.



# Normandy Park's Credit Rating Upgraded

BY JENNIFER FERRER-SANTA INES, FINANCE DIRECTOR

Just as we have credit scores, so does your local government. Individual credit scores fall between a range of 300–850 and these ranges determine if you have bad credit or excellent credit. The City of Normandy Park is evaluated by one of the main rating agencies: Moody's, Fitch, and Standard & Poor's. The city is assigned a credit rating based on its ability to pay back debt and determine the likelihood of default. These ratings are important to the city in the event the City Council decides to issue bonds for a capital infrastructure purpose.

Standard & Poor's contacted the city last March to conduct a rating review. Finance Director Jennifer Ferrer-Santa Ines discussed the financial policies Council adopted to ensure adequate practices and management of city funds. Staff and Council closely monitored expenses, making sure to meet ending fund balance projections. As a result of the review, Standard & Poor's upgraded the city's credit rating from A+ to AA-. This rating reflects increasing rating agency confidence that the city can meet its financial obligations relative to its long-term debt.

## Standard & Poors

Long-Term Issue Credit Ratings*	
Category	Definition
AAA	An obligation rated 'AAA' has the highest rating assigned by S&P Global Ratings. The obligor's capacity to meet its financial commitment on the obligation is extremely strong.
AA	An obligation rated 'AA' differs from the highest-rated obligations only to a small degree. The obligor's capacity to meet its financial commitment on the obligation is very strong.
A	An obligation rated 'A' is somewhat more susceptible to the adverse effects of changes in circumstances and economic conditions than obligations in higher-rated categories. However, the obligor's capacity to meet its financial commitment on the obligation is still strong.
BBB	An obligation rated 'BBB' exhibits adequate protection parameters. However, adverse economic conditions or changing circumstances are more likely to lead to a weakened capacity of the obligor to meet its financial commitment on the obligation.
BB; B; CCC; CC; and C	Obligations rated 'BB,' 'B,' 'CCC,' 'CC,' and 'C' are regarded as having significant speculative characteristics. 'BB' indicates the least degree of speculation and 'C' the highest. While such obligations will likely have some quality and protective characteristics, these may be outweighed by large uncertainties or major exposures to adverse conditions.
*The ratings from 'AA' to 'CCC' may be modified by the addition of a plus (+) or minus (-) sign to show relative standing within the major rating categories.	

# PROS Planning Update

BY AMANDA LEÓN, PARKS DIRECTOR

The Parks Recreation and Open Space Plan, the PROS Plan, had a successful Open House Workshop on March 25, 2017. Residents, friends, neighbors, and community members participated in a three-hour drop-in workshop in the recreation center gym. Parks Commissioners, City Councilmembers, staff, and ELM Environments consultants were on hand to capture 60 participants' comments, ideas, visions, suggestions, and big dreams about the past, present, and future of the City of Normandy Park's Park and Recreation programs. During the event the Parks Commission launched the public input survey. To date, we have received 220 PROS Plan surveys.

The PROS Plan public surveys revealed some enlightening information about parks and recreation in the city. Most residents visit their parks on a weekly basis, they asked for more trail and walking connections to parks and between parks, more small neighborhood parks, additional play equipment, more varieties of play equipment, improved habitat and ecological diversity, beach access, more picnic and gathering spaces, and more concerts and events in parks.

ELM completed the Inventory and Assessment portion of the PROS Planning process in May, 2017. Throughout the summer and into the fall, the Parks Commission and Council have more public workshops and events scheduled to engage community input. Coming up next in the planning process is:

## **Workshop 2: Explore various approaches**

*July 19th @ City Hall, 7pm*

Parks Commission Meeting. Present a draft plan and collect comments from Parks Commissioners and Community.

## **Workshop 3: Explore various approaches**

*August 8th @ City Hall, 7pm*

City Council Meeting. Present an updated draft plan and collect comments from Councilmembers and the community.

## **Workshop 4: Prepare preliminary recommendations**

*September 6th @ City Hall, 7pm*

Parks Open House. Present the draft plan and collect comments from the community.

## **Workshop 5: Prepare preliminary recommendations**

*September 20th @ City Hall, 7pm*

Parks Commission Meeting. Present a draft plan that incorporates comments from the Parks Open House.

If you have questions or would like to talk about the PROS Planning process please call Amanda León, Parks Director, at 206-248-8257.



# Engaging Trees in South King County

BY AMANDA LEÓN, PARKS DIRECTOR

The South King County Arts and Heritage Organization, commonly called SoCo Culture, has started a new initiative to highlight and bring attention to the significance of trees in our community.

Trees provide a cultural connection—they help identify significant places. They offer a historical connection to the past, a connection to the built environment, including art and architecture, as well as garden design or historical landscapes. Many trees are significant to the ecological community—sometimes rare, endangered, or old. These trees provide habitat for birds, wildlife and ecosystems for endangered and dependent species.

They provide aesthetic value with their size, texture, scale and visual impact.

Barbara McMichael from SoCo Culture is collaborating with arborists, botanic gardens, and historical societies to highlight trees of cultural significance. This endeavor encourages residents to champion trees that might be old, sizable, unique, rare, provide wildlife habitats, in unique/unusual locations, and genetically significant.

If you think you know of a culturally significant tree in Normandy Park please give Barbara McMichael a call at 206-878-6912 or send her an email at [info@sococulture.org](mailto:info@sococulture.org) to discuss your tree(s) with her experts.



# Completion of Normandy Road Project

BY BRENDA O'NEILL, ENGINEER

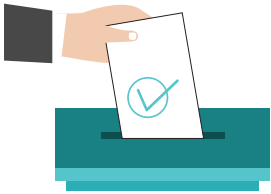
The Normandy Road project provides low impact development storm water management downslope from Manhattan Village and John Knox Church. As these areas, which are vital parts of Normandy Park, re-develop and improve, such storm drainage will be necessary.

Some aspects of the project are beyond simple storm drainage: pervious sidewalks, revision of the historic Nist Park fence (built to keep pedestrians and bicyclists safe), street trees, and paving (not originally in the design).

The road project was lengthened a few weeks in order to accommodate street trees and paving.







## REGISTER TO VOTE!

To register to vote in Washington, you must be:

- A citizen of the United States
- A legal resident of Washington state
- At least 18 years old by election day
- Not disqualified from voting due to a court order
- Not under Department of Corrections supervision for a Washington felony conviction

### Three ways to register

#### 1. Online

- You can register online, 24 hours a day, at the Washington Secretary of State's website.
- To register online, you will need a current Washington State driver license or a current Washington State ID card. If you do not have either of these, you can still register by mail or in-person.

#### 2. By mail

- Download and print a voter registration form and mail it to King County Elections. Forms are available in many languages.

#### 3. In-person

- You can register to vote in-person at one of our locations:
  - *Renton: King County Elections Office*
  - *Seattle: King County Elections Voter Registration Annex*
  - *You can also register to vote at one of the King County Election's community events.*

**Dr. Bae has been named a "SEATTLE TOP DENTIST" by her peers and recognized in the *Seattle Metropolitan Magazine***

Dr. Vivian Bae has been serving the Des Moines/Burien area since 2005. As members of the local community, her office is committed to providing personal, high quality dental care to you and your entire family.



**Vivian H Bae DDS**  
FAMILY DENTAL CARE



20710 1st Ave S, Des Moines, WA 98198 | 206-878-8180 | [www.vivianbaedds.com](http://www.vivianbaedds.com)

**HOMEOWNERS | AUTO | UMBRELLA | BUSINESS | BOAT | RV**

## HAVE YOUR INSURANCE PREMIUMS INCREASED?

Did you know you should review your insurance at least every 3 to 5 years?

You may not be getting the most favorable costs. As Independent Agents we work to get our clients the most competitive rates to suit their needs, with exceptional service and a friendly smile. Call us today to review your current policies! We proudly represent the following companies...



- |                      |                    |
|----------------------|--------------------|
| • Safeco             | • Progressive      |
| • Liberty Mutual     | • CBIC             |
| • Mutual of Enumclaw | • Foremost         |
| • Oregon Mutual      | • Geovera          |
| • QBE                | • ...and many more |

**CONTACT ONE OF OUR AGENTS TODAY AT 206-244-3566**

**SERVING THE COMMUNITY SINCE 1948!**

[www.pollockinsurance.com](http://www.pollockinsurance.com) | [greatrates@pollockinsurance.com](mailto:greatrates@pollockinsurance.com)



*Ranger & the Re-Arrangers will perform July 23*

## Arts Commission Music in the Park will Return Sunday Nights in July and August

BY ZEN McMANIGAL, ARTS COMMISSION CHAIR

Just a reminder that the Music in the Park concert series, presented by the Normandy Park Arts Commission, will once again fill Marvista Park with performances on Sunday evenings starting in mid-July and running through August. It's free, it's local, and it's a chance to hear some great music.

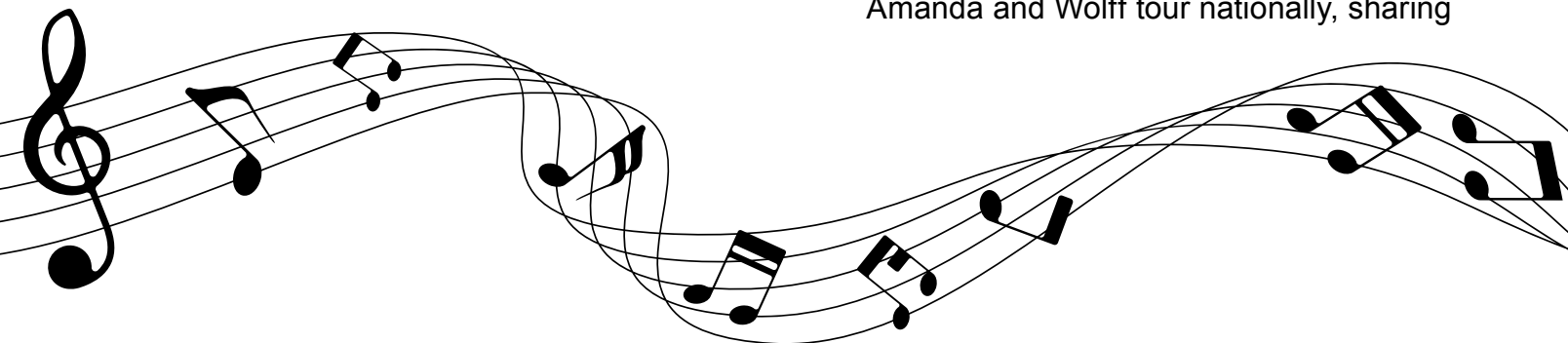
This is the Arts Commission's 22nd year of hosting the concert series for our community, and we have another great group of bands set for this summer, so bring your blanket or lawn chair and join us from 5 to 6:30pm.

Starting on July 16th, we welcome back the fantastic Beatles tribute band, The Nowhere Men, for their authentic versions of Fab Four tunes from Meet the Beatles to Magical Mystery Tour.

Next on July 23rd, we have a double bill. First, Jeff Evans brings his X-STREAM Magic Show to entertain the kids (and adults) sponsored by 4-Culture and the King County Library System. Ranger & the Re-Arrangers will close out the afternoon with some original & classic Gypsy Jazz.

The talented Gothard Sisters have been traversing the Atlantic between the east coast and Europe as featured entertainers on the Disney Cruise Line, but they'll be back on dry land and performing for us on July 30th. Their fresh take on Celtic music combines original songs, beautiful vocals, dance, and a vast array of instruments.

On August 6th, The Winterlings will be here. The prolific songwriting folk duo of Amanda and Wolff tour nationally, sharing





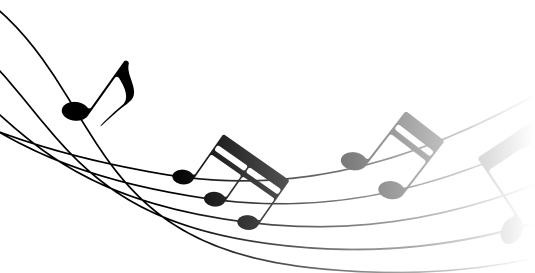
their blend of roots and alternative folk music. Their unique sound and story-telling lyrics range from haunting ballads to rollicking banjo.

Then, on August 13th, the big 7-piece Rat City Brass band will be here to recreate classic pop and Tijuana Brass-inspired songs like The Lonely Bull, A Taste of Honey, and Casino Royale.

On August 20th, those who enjoyed Rabbit Wilde at our summer series a few years ago will recognize the extremely talented bluegrass group known as Kuinka. The band's name may have changed, but the beautiful vocal harmonies and toe-tapping high-energy music is still as exciting and heart-warming as ever.

Finally, on August 27th, we wrap up the concert series and say goodbye to lazy summer days in fitting manner—like a final dose of Vitamin D—with the sounds of the tropics from the Tikigraphs. From vocals, to marimbas, surf guitar and even bird calls, they carry on the tradition of Exotica music that became such a part of mid-century pop culture.

It's free, it's local, and it's a chance to hear some great music. Please join the Normandy Park Arts Commission in hosting Music in the Park!



## Normandy Park Facility Rentals Available

Have you been looking for a place to hold a birthday party, meeting, class, celebration, or sporting event? City Hall Park, located at 801 SW 174th Street, has two Little League Ballfields, a T-Ball Field, and a Soccer Field available for family, group, instruction or team usage. City Hall Park is equipped with restrooms, picnic tables, walking trails, and a playground. The Recreation Center is also in City Hall Park and offers a gym, dance studio, and community room rentals.

Marvsita Park, located at SW 200th and 4th Ave SW, offers a gazebo shelter, playground, restroom, walking trails, picnic tables, field space, and barbeque. The gazebo can be reserved and is ideal for picnics, meetings, parties, or fitness classes.

Visit the city's website at [www.normandyparkwa.gov](http://www.normandyparkwa.gov) or contact Amanda León at **206.248.8257** for more information.

### CITY BALLFIELDS

Youth Baseball/Football/  
Soccer Practice .....\$6/hr per field  
Tournaments..... \$30/per game  
Clinics/Camps/  
Exercise Groups.....\$22/hr per field  
Family & Group use..... \$15/hr per field

### COMMUNITY ROOM

One time Rental ..... \$30/hr  
Ongoing Rental .....\$20/hr

### DANCE STUDIO

One time Rental .....\$20/hr  
Ongoing Rental .....\$15/hr

### GYM

One time Rental ..... \$45/hr  
Ongoing Rental ..... \$30/hr

### MARVISTA GAZEBO PICNIC SHELTER

\$100 for 4 hours  
\$45 Refundable Damage Deposit



*Dance Studio*



*Community Room*



*Gym*



*City Hall Ballfield*



*Marvista Park Shelter*



*Officer Ezekiel Lee*

## Officer Graduation

Officer Ezekiel Lee was hired by the Police Department on February 8, 2017, and started the Police Academy February 18th. Over the last four months, Officer Lee has worked hard to meet all of the rigorous challenges of the Academy and he did quite well, culminating with his graduation on June 28th, 2017. He will now enter into field training for the next three months before being released to patrol.

Officer Lee grew up in the Puyallup/Tacoma area before attending college at Grambling State University in Louisiana where he earned his Bachelor's degree in Criminal Justice. After completing his degree, Ezekiel returned to Washington where he worked for the next five years for Russell Investments as an Information Technology Application Support Manager. Officer Lee enlisted in the United States Army specializing as an Air Traffic Control Equipment Repairer, maintaining tactical radio communications and area surveillance and precision approach radars. Six years later at the end of his enlistment, he was honorably discharged at the rank of Sergeant. Officer Lee and his wife Afilisha have been married for two years.

Congratulations Ezekiel! Please be sure to say "hi" and introduce yourself to Officer Lee over the coming months, as he gets to know our community.

## Drug Take Back Program

In May, the Police Department added a collection bin to our drug take back program. The bin is located in the City Hall lobby and is available for drop offs from 9am to 3pm Monday through Friday with the exception of holidays. We will not accept sharps, aerosols, or inhalers.

By using this program the goal is to keep unused medications out of landfills and water systems, and ensure they are properly destroyed. In addition, by destroying unwanted medications we reduce the chances of any accidental overdoses or of contributing to the opiate epidemic, which is not only a regional issue but a national one as well.





# Status of Hiring Police Officers

BY DAN YOURKOSKI, POLICE CHIEF

We are down to two vacancies as of June, 2017. Officer Ezekiel Lee graduated from the Police Academy June 28, 2017 and has moved on to field training. Field training lasts three months at which time Officer Lee will begin being able to fill shifts, and the Department will see an increase in the amount of time being spent on patrol. We are all looking forward to Officer Lee being certified to full duty and the benefit his addition will bring to the community.

Unfortunately, Officer Mona Planesi suffered an injury and had to be removed from her academy class to heal. Once healed she will resume at the academy. This will, however, delay her return to us, and her ultimate ability to fill shifts.

We continue to make every effort to fill the remaining two positions, and currently have two potential candidates in background. As I have mentioned previously, even with these two

candidates, it will still be an extended amount of time until these Officers are filling shifts and making an impact in Normandy Park. In light of Academy and field training, it will be nearly eight months until our newest Officers are able to work on their own.

We have an excellent relationship with the Academy, which has enabled us to get our new people in as quickly as possible, and hopefully that will continue with our next two hires as well. The rebuilding of our Department is slowly but steadily headed in the right direction. With the solid core group already in place, and with new Officers coming on board, I am hoping we will have all hiring completed in the next couple months and have everyone trained by the first quarter of 2018. I continue to ask for your patience, as we try to assemble the best Department possible for our deserving community.

## “Your Neighborhood Booster Club!”

Friends of Normandy Park - Your neighborhood booster club is looking for new board members and volunteers!

**Are you passionate about your neighborhood and would like to contribute your experience and ideas?**

Friends of Normandy Park (FONP) is a 501(c)(3) organization of community members and local businesses who wish to enhance Normandy Park. Through fundraising and event and project planning, FONP will serve as a facilitator to build community pride, improve business climate, and attract people to Normandy Park.

Through education, participation, facilitating community events like Zombie Fest Northwest - Disaster Preparedness and Winterfest, we can generate more community spirit. This is just the start of many possibilities. Future fundraising enterprises will help fund local non-profit organizations or Normandy Park initiatives.

Looking for experience in event planning, grant writing, or fundraising. Or if you would just like to volunteer for an event or to share your ideas are welcome!

Learn more about joining and volunteering by contacting

**Patti Gifford** [pattigifford2@gmail.com](mailto:pattigifford2@gmail.com)



**Friends of  
Normandy Park**

# Summer in the Park

Y I S U N B A T H I N G B Q P  
P L V D O G W A L K G R U K I  
R H O D O D E N D R O N T M C  
C P S N K T V P L L Z S T O N  
H O U O W D E B A T A C E W I  
O S N G X K P B J T M A R T C  
N C S V E N J S T C I R F H S  
E A H V E T B P W H Q O L E M  
Y M I A B R S A O I F S I L O  
B P N C L S T O R P M S E A R  
E F E A U U P I U B S M S W E  
E I B T E M A E B N E I I N S  
S R B I S M R O X L D C C N K  
M E X O K E K E V O E X U L G  
N M G N Y R S Q V C V S G E E

Convertibles  
Butterflies  
Barbecue  
Patio

Dogwalk  
Rhododendron  
MowTheLawn  
Popsicle

HoneyBees  
Summer  
PugetSound  
Swimming

Vacation  
Campfire  
Picnic  
Sunbathing

S'mores  
BlueSky  
Parks

*Answer Key on Page 20*



## **SAVE THE DATE!**



**YOU are invited to a FREE After-Hours Mixer, hosted by your local businesses and the City of Normandy Park Economic Development Committee!**

July Mixer: Marina Medical at Normandy Park Towne Center  
19901 1st Avenue South #409, Normandy Park, WA 98148

Date: Tuesday, July 18

Time: 6:30pm to 7:30pm

Enjoy complimentary refreshments, win gift cards and learn about becoming a volunteer in Normandy Park! This is a new series of monthly networking events to introduce YOU to our local businesses, the people who run them and the benefits of shopping local! Meet residents, city staff and members of the Friends of Normandy Park your local booster club and 501c3. Bring your questions and ideas!

**THANKS Pier View Chiropractic for hosting the June Mixer!**

### **Mark Your Calendar for upcoming Mixers**

**Tuesday, August 15, 6:30pm-7:30pm - Ace Hardware at NPTC**

**Tuesday, Sept. 19, 6:30pm-7:30pm - Optimal Health Spine & Wellness, 17651 1st Ave. S. #101, Normandy Park**

**Tuesday, October 17, 6:30pm-7:30pm - Normandy Park Market at NPTC**

**Tuesday, November 21, 6:30pm-7:30pm - T-Mobile at NPTC**

*To host a mixer or learn more contact: EDC Chair Susan West, 206-818-6945,*

*[susan.west@ci.normandy-park.wa.us](mailto:susan.west@ci.normandy-park.wa.us)*

# Transit Pilot Project

BY DAVID NEMENS, COMMUNITY DEVELOPMENT DIRECTOR

Let's take transit to the new Link Light Rail station at Angle Lake! A transit-enabled future—with easy access from various Normandy Park locations to SeaTac Airport, downtown Seattle, South Lake Union, and the University of Washington and Husky Stadium—is closer than you think!

The City of Normandy Park has been selected by King County Metro to participate in a pilot project as part of Metro's Community Connections program. Community Connections has on-going pilot projects across King County, working with communities to develop innovative, customized mobility services to meet local transportation needs. Example services include routes with flexible service areas, real-time ridesharing between home neighborhoods and transit centers, reservation-based local trips, and ride matching.

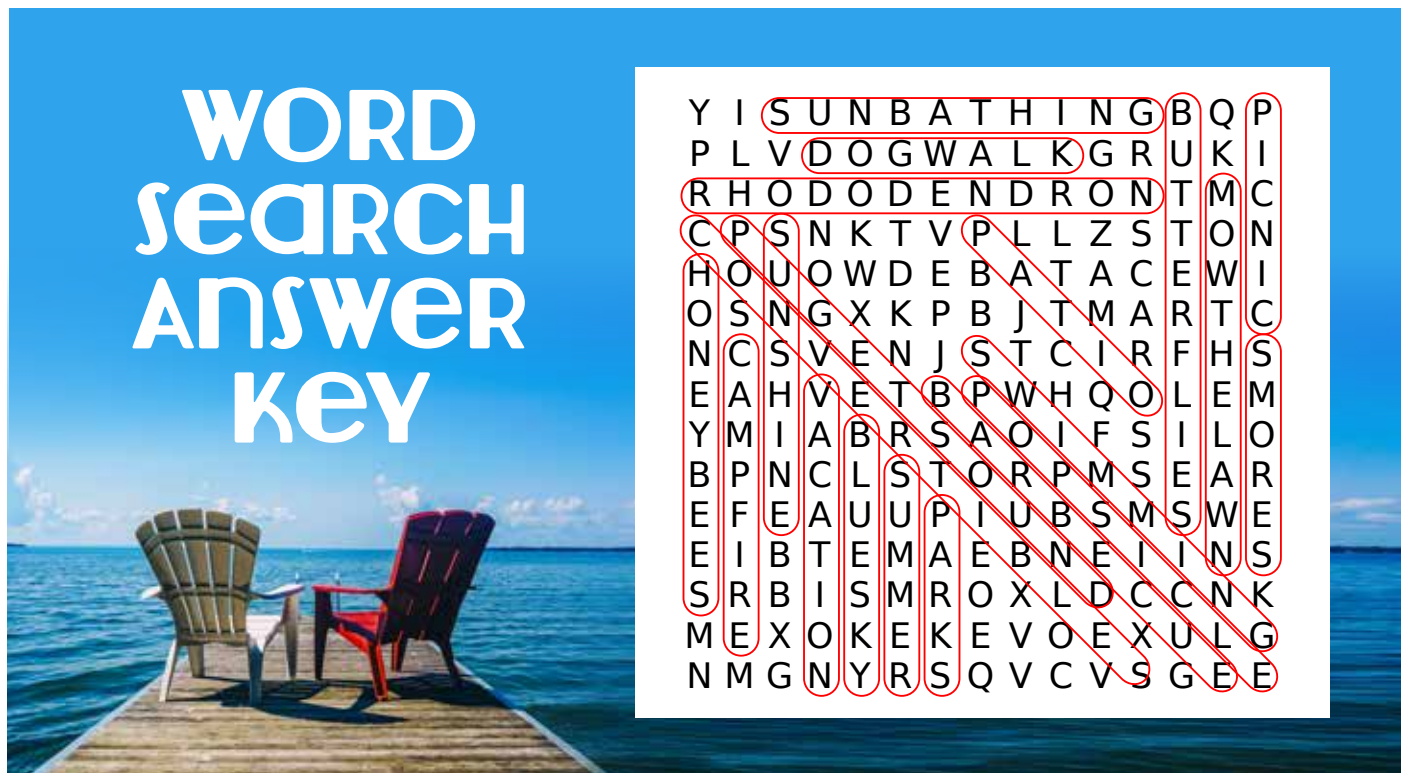
The City of Normandy Park and Metro will be forming a working group to explore how

alternative services might fit some of the city's transportation needs. The group needs your thoughts and opinions.

If you would like to participate in the working group and can commit to four evening meetings this summer and fall, or if you would just like to stay informed about the process moving forward, please contact Metro at [haveasay@kingcounty.gov](mailto:haveasay@kingcounty.gov) or 206-263-9768. Metro will offer additional opportunities for the public to provide feedback on transportation needs and potential alternative service solutions. These opportunities will include open houses, City Council meetings and online surveys.

Right now, you might check out what Metro can bring to the table. See: <http://metro.kingcounty.gov/tops/van-car/van-car.html>, particularly TripPool and Community Van.

Plan to participate!





# Come Back This Fall to a Better Pool



## SUMMER CLOSURE JULY 17 – SEPTEMBER 17

Get your pool time in before our closure this summer. The District will be performing a number of deferred maintenance items listed below. Our goal is to improve your experience and extend the life of the pool. We appreciate you working with us.

### POOL LINER REPLACEMENT

The pool liner at Mount Rainier Pool will be replaced with a liner that is the same as the Auburn Municipal Pool. The new liner will help make the pool look cleaner, brighten the pool and ensure the long-term health of the pool.

### BULKHEAD REPLACEMENT

The existing bulkhead has been fixed in place for over a decade, and has become detached from the pool wall. The new bulkhead will be able to move to open up programming opportunities.

### POOL CHAIR LIFTS

To improve access to the pool, there will be two new chair lifts installed at the pool. A lift will be installed on each side of the bulkhead. This will give users full access to the pool.

### POOL TILE REPLACEMENT

The edges of the pool are currently lined with tile that is cracked and dirty. We will be replacing this tile with new tile, and installed new signage.

### FALLING BRICK

The interior bricks are starting to spall and chip due to the age of the facility and the atmospheric conditions of the pool. Our goal is to improve the safety of the walls, and restore them to their original luster (as much as possible).

### BEHIND THE SCENES

We are going to try to maximize the closure time by completing as many projects as possible. Many of these will be behind the scenes including surge tank, piping, flooring and other repairs. By completing these projects, we are hoping to avoid future emergency closures and to keep the pool operating in tip-top shape.

### DEEP CLEANING AND REFURBISHING

We will be working during the closure to deep clean the facility and many other cosmetic repairs to improve your experience at Mount Rainier Pool including the entry area, locker rooms and stands. We will be sending out periodic updates on the closure including Frequently Asked Questions and alternative sites for you to use during the closure. Feel free to call or email us if you have any questions. My phone number is (206) 429-3852 and my email is [scott.deschenes@desmoinespool.org](mailto:scott.deschenes@desmoinespool.org).



Mount Rainier Pool | 22722 19th Ave S. | Des Moines, WA 98198

(206) 824-472 | [info@mtrainierpool.com](mailto:info@mtrainierpool.com)

Governed by Des Moines Pool Metropolitan Park District

Operated by Aquatics Management Group [AMG]

# Summer 2017 Calendar of Events

The Parks Department will provide the full year of events and additional information on the city's website as it becomes available.  
Contact Parks Director Amanda Leon to have your community event listed. Events that have been issued a WSLCB banquet permit cannot be listed on this calendar.

DATE	EVENT TITLE	ORGANIZER	LOCATION
<b>JULY</b>			
Tuesday, 4th	<b>4th of July Celebration Fun Run, Parade and Community Celebration</b>	The Cove	The Cove
Saturday, 8th	<b>Stewards of The Cove</b>	The Cove	The Cove
Sunday, 16th	<b>Music in the Park</b> <i>Nowhere Men</i>	Arts Commission	Marvista Park
Wednesday, 19th	<b>PROS Planning</b>	Parks Commission	City Hall
Sunday, 23rd	<b>Music in the Park</b> <i>Kids Concert</i>	Arts Commission	Marvista Park
Wednesday, 26th	<b>Library 2GO/Des Moines Food Bank Garden Truck</b>	Parks Commission	Marvista Park
Sunday, 30th	<b>Music in the Park</b> <i>Gothard Sisters</i>	Arts Commission	Marvista Park
<b>AUGUST</b>			
Sunday, 6th	<b>Music in the Park</b> <i>The Winterlings</i>	Arts Commission	Marvista Park
Tuesday, 8th	<b>PROS Planning</b>	Parks Commission/ City Council	City Hall
Saturday, 12th	<b>Stewards of The Cove</b>	The Cove	The Cove
Sunday, 13th	<b>Music in the Park</b> <i>Rat City Brass</i>	Arts Commission	Marvista Park
Sunday, 20th	<b>Music in the Park</b> <i>Kuinka</i>	Arts Commission	Marvista Park
Wednesday, 23rd	<b>Library 2GO/Des Moines Food Bank Garden Truck</b>	Parks Commission	Marvista Park
Sunday, 30th	<b>Music in the Park</b> <i>The Tikigraphs</i>	Arts Commission	Marvista Park
<b>SEPTEMBER</b>			
Wednesday, 6th	<b>PROS Planning Open House</b>	Parks Commission	City Hall
Saturday, 9th	<b>Stewards of The Cove</b>	The Cove	The Cove
Saturday, 16th	<b>NW Zombiefest</b>	The Friends of Normandy Park	Normandy Park Towne Center
Wednesday, 20th	<b>PROS Planning</b>	Parks Commission	City Hall
Wednesday, 20th	<b>Library 2GO/Des Moines Food Bank Garden Truck</b>	Parks Commission	Marvista Park



# Medical Lending Closet

Having surgery and need medical equipment? Check us out! The Normandy Park-Des Moines Activity Center has a closet that features equipment available on a first-come basis for short-term use (one to three months). Items are clean when you check them out, and you bring items back clean and ready for the next user! Bath benches, bedside commodes, shower benches, wheelchairs, and walkers. Available for all ages!




Call the Des Moines-Normandy Park Activity Center for equipment availability at 206-878-1642.  
SUGGESTED DONATION: \$5.



We go  
door to door  
to promote  
your business.



To advertise or for more information,  
contact Nicole Cross at 253-970-0054  
or [nicole@philipspublishing.com](mailto:nicole@philipspublishing.com)

 <p><b>Kelly Vroman</b> CRNA/ARNP Botox and Fillers Specialist</p> <p>Practicing at  skinperfect</p> <p>Call or Text @ 206-250-8593 for your appointment</p> <p><b>SPECIAL! Buy 50 units of Botox receive a syringe of Filler for only \$99! A \$650 value!! Supplies are limited!</b></p>	 <p><b>skinperfect</b> AESTHETICS</p> <p>NEW LOCATION!</p> <p>636 SW 152nd St., Ste. D • Mid-Town Burien <a href="http://www.skinperfectinseattle.com">www.skinperfectinseattle.com</a> • Text: 206-659-3656 Phone: 206-439-7546</p> <p><b>*NEW* We now offer PhotoFacials for Skin Rejuvenation and Acne Treatments! \$50 off your first treatment! Teen Acne Treatments Buy one get one free! \$129 value!</b> Limit one per client / Expires 6/2017</p>
--	---

**Introducing My Resource™**

Easily discover new ways to better your home, neighborhood and the planet on **My Resource**.

With 24/7 access on any device, you can select the service you need. Then relax. We'll handle it from here.™



# Highlights from the Normandy Park Arts Festival

May 20-21 at City Hall



**People's Choice**  
"Winter Watch" by Tracy LeMoine



**Best in Show**  
"Retainer" by Robert Dean



**First Place: Drawing**  
"Fall Leaves" by Danny J. Bobrow



**First Place: Photography**  
"Reflections" by Doug Early



**First Place: Sculpture—Youth**  
"Fructus Terrae" by Ashley Sills



**First Place: Painting—Youth**  
"Ocean Landscape" by Carmela Todd

Live Entertainment provided by **Ranger and the Re-Arrangers Jazz Trio**,  
**Cascade Middle School Band**, and the **Marvista Marimba!**



# From the City Manager

## Economic Development through Advancement of Business Health and Viability



Mark Hoppen,  
ICMA-CM  
City Manager

To sustain economic development in Normandy Park four focus areas can make a difference: 1) development of infrastructure and zoning; 2) advancement of business health and viability; 3) promotion of retail areas; and 4) design of retail areas as places to shop, work, walk, invest and live.

This article discusses the second such focus area, advancement of business health and viability. At this time, the principal places to consider when discussing ways to encourage economic development in Normandy Park are the Manhattan Village area and the Normandy Park Towne Center.

To sustain small businesses in Normandy Park, they must be recruited, retained and supported. For the most part, site leasing managers and owners at Manhattan Village and Normandy Park Market, recruit and care for businesses. In recent years, current managers have developed full or nearly full business occupancy, and Dunn Lumber conducts a robust business. These businesses rely on the expertise of these managers and owners, but where else is expertise available?

The City of Normandy Park currently supports small business resources at the Highline Community College Small Business Development Center. Interested businesses, or people thinking of starting a business, can contact Jennifer Dye, [jdye@highline.edu](mailto:jdye@highline.edu), or Rich Shockley, [rshockley@highline.edu](mailto:rshockley@highline.edu), to gain in-person support.

The Small Business Development Center is the best available outside client resource for Normandy Park businesses and business start-ups. This year, the City of Normandy Park applied for a grant and the Port of Seattle granted 50% of the yearly \$5000 cost of this support. This \$5000 share is the smallest proportional share of the Soundside Alliance participant cities, including—in addition to Normandy Park—Burien, Tukwila, SeaTac, and Des Moines. The City of Federal Way, which is not a member of the Soundside Alliance, pays an even larger support share.

The SBDC at Highline College is part of a system of business support professionals at Washington State University, Western Washington University, several community and technical colleges, as well as at associated economic development agencies. SBDC services help limited-size business and small business aspirants develop prudent small business growth and survival strategies. The SBDC states that it provides confidential, no cost, customized, one-on-one business advising, business training, and advisor-assisted market information.

The next City Manager article in The Scene will discuss promotion of retail areas.



## Support your local Normandy Park Business

### NORTH DISTRICT – NEAR NORMANDY RD

Access Pharmacy .....	(206) 242-0040
Archie's Mexican Restaurant .....	(206) 436-0850
Dunn Lumber Company.....	(206) 242-1010
Fit for Mom .....	(503) 381-5156
Four Star Cleaners.....	(206) 242-9191
Healthy Nail & Spa.....	(206) 735-7375
Kre-8-tive Kidz International.....	(206) 248-4301
Manhattan Hair Salon, Inc. ....	(206) 790-0809
Melanie's Dance Unlimited .....	(206) 431-1989
Normandy Cleaners .....	(206) 431-5363
Normandy Park Family Dentistry .....	(206) 244-3941
Optimal Health Chiropractic .....	(206) 241-3836
Pass It On .....	(206)-280-7272
Paws In The Park Pet Supply .....	(206) 242-7387
Quality Food Store—QFC #805 .....	(206) 243-9340
Redbox Automated Retail, LLC .....	(630) 756-8446
Seattle Taekwondo Academy, LLC .....	(206) 444-9473
Starbucks Coffee #3334 .....	(206) 318-8705
Teak House Thai Restaurant .....	(206) 244-8444
The Normandy Park UPS Store .....	(206) 919-3041

### SOUTH DISTRICT – NEAR 200TH

ACE Hardware .....	(206) 824-2288
AD Specialties & Promotions .....	(206) 223-1414
Anne Armstrong Therapy, Inc. ....	(206) 244-5157
Auntie's Playhouse Childcare Center, LLC .....	(206) 592-6141
Bishop Law Offices P.S.....	(206) 592-9000
Can't Stop Smackin' .....	(206) 249-8275
DAL Law Firm .....	(206) 408-8158
Dena Johnson Counseling Service .....	(253) 670-0777
Desert Sun Tanning .....	(206) 592-8267
Dr. Max Lee, MD .....	(206) 824-2183
Edward Jones Investments.....	(206) 824-9442
Emma Skjonsby, MA, LMHC .....	(206) 229-9208
Face to Face Euro Spa .....	(206) 429-3842
Freedom Snacks.....	(253) 886-1838
Glow Foods, Inc. ....	(206) 592-6579
International Freight Systems (of WA) LLC .....	(206) 433-2614
Jessica Misner, Psy.D. ....	(206) 747-7274
John D Slightam, MD .....	(206) 824-5555
The Law Offices of Kurt D. Bennet .....	(206) 447-1661
Law Office of Michael J. Siefkes PLLC.....	(206) 431-5152
Mia Bella Salon .....	(206) 431-5652

### SOUTH DISTRICT – NEAR 200TH (continued)

Nails BK & Spa of D LLC .....	(206) 212-6338
Normandy Park Ale House .....	(206) 592-6986
Normandy Park Athletic Club.....	(206) 870-9000
Normandy Park Executive Center .....	(206) 870-7540
Normandy Park Hair Designs .....	(206) 824-6830
Normandy Park Market—IGA.....	(206) 651-7794
Normandy Park Subway .....	(206) 406-0698
Normandy Perk LLC .....	(206) 454-8384
Northwest Clinic of Chiropractic PLLC .....	(206) 429-2922
Olympic View Dental .....	(206) 824-4700
Papa John's Pizza.....	(206) 248-3333
Pier View Chiropractic, Inc PS .....	(206) 824-7200
Priceless Pet Clinic .....	(206) 592-6454
Rite-Line Tax Service .....	(206) 246-4881
Robert E Parker PhD PC .....	(206) 240-9880
SharpChip Consulting .....	(206) 429-3372
T-Mobile.....	(206) 878-6506
The Samara Hubner, Inc.....	(206) 878-8875
The Soggy Doggy .....	(206) 824-6600
Walk in Hope Counseling, LLC .....	(425) 312-3791
Well Practices, PLLC .....	(425) 443-7900
Donna White Counseling .....	(206) 380-8617

### CENTRAL DISTRICT – NEAR 185TH

Cheveux Design.....	(206) 778-3074
Gilbert Family Dentistry.....	(206) 242-5808
Pacific Northwest Counseling .....	(425) 322-9237
Sara Himes Consulting .....	(425) 390-4677
Transformative Counseling & Family Services.....	(206) 914-6820





# Shop the Park

FOR ALL OF YOUR PROFESSIONAL SERVICES  
AND RETAIL NEEDS



**HIGHLINE COUNSELING • PIER VIEW CHIROPRACTIC • MIA BELLA SALON**  
**SUBWAY • PAPA JOHNS • PRICELESS PET CLINIC • SOGGY DOGGY • BK NAILS**  
**DESERT SUN TANNING • NORMANDY PERK • ROSE PHO • NORMANDY PARK ATHLETIC CLUB**  
**ACE HARDWARE • T-MOBILE • MARINA MEDICAL • NORMANDY PARK MARKET**  
**INTERNATIONAL FREIGHT SYSTEMS • NORMANDY PARK ALE HOUSE • AUNTIE'S PLAYHOUSE**  
**CAN'T STOP SMACKIN' • NORMANDY PARK EXECUTIVE CENTER • FREEDOM SNACKS**

*Normandy Park Towne Center • 19805 1st Ave S, Normandy Park*

[www.normandyparktownecenter.com](http://www.normandyparktownecenter.com) • [facebook.com/normandyparktownecenter](https://facebook.com/normandyparktownecenter)

# NORMANDY PARK MARKET



Normandy Park Market is YOUR neighborhood grocery store. From our Summertime Weekend BBQ's to our Tuesday Senior Discount Days, Normandy Park Market is THE happening place to be!

**Submit your email at [normandyparkmarket.com](http://normandyparkmarket.com) and receive a 10% off coupon on your next purchase.**

**Mention the word **SUNFLOWER** and receive a 10% discount on all your **FLORAL** purchases.**

Check us out on our webpage at [Normandyparkmarket.com](http://Normandyparkmarket.com) or on our Facebook page to see our weekly deals.